

Music Theory Southeast 2025

Furman University

March 7–8, 2025



Accommodations and Arrangements Guide

Click to learn more about each topic or scroll through.



Lodging



Travel



Dining



Local Attractions



Accessibility

Lodging



593 Roe Center Ct, Travelers Rest, SC 29690

[Hampton Inn Greenville/Travelers Rest](#)

(Closest Distance, Mid-Price)

Cost: Approximately \$170/night

Parking: Free

Time to Furman: 6 Minutes

[Google Maps Link](#)



407 N Main St, Greenville, SC 29601

[Holiday Inn Express & Suites Greenville-Downtown](#)

(Mid-Distance, Highest Price)

Cost: Approximately \$300/night

Parking: Free

Time to Furman: 16 Minutes

[Google Maps Link](#)



40 W Orchard Park Dr, Greenville, SC 29615

[Hyatt Place Greenville/Haywood](#)

(Furthest Distance, Lowest Price)

Cost: Approximately \$130/night

Parking: Free

Time to Furman: 25 Minutes

[Google Maps Link](#)

Travel

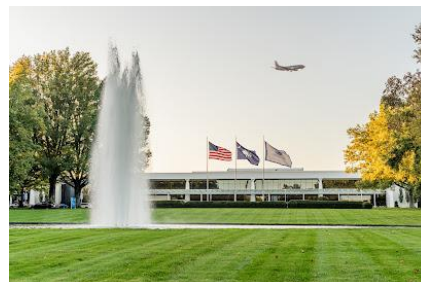
Local Airports

Greenville-Spartanburg International Airport (GSP)

Rental Cars Available: Avis, Budget, Enterprise,
Hertz, and [more](#)

Time to Furman: 30 Minutes

[Google Maps Link](#)

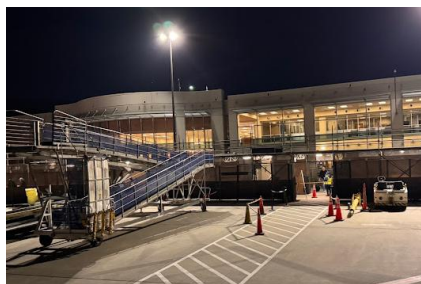


Asheville Regional Airport (AVL)

Rental Cars Available: Avis, Budget, Enterprise,
Hertz, and [more](#)

Time to Furman: 50 Minutes

[Google Maps Link](#)



Charlotte Douglas International Airport (CLT)

Rental Cars Available: Avis, Budget, Enterprise,
Hertz, and [more](#)

Time to Furman: 1 Hour, 45 Minutes

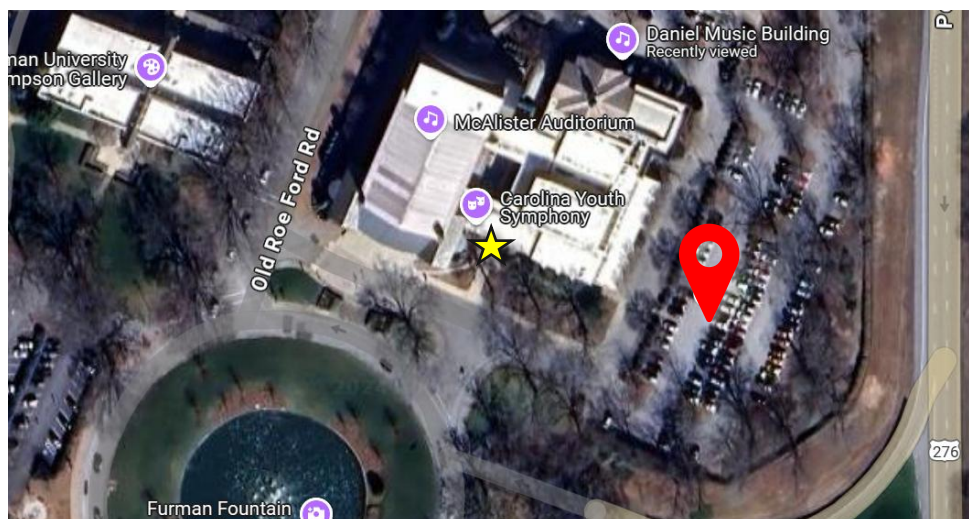
[Google Maps Link](#)



Parking at Furman University

Parking next to the Daniel Music Building is free, no temporary parking pass needed. The [Google Map Pin](#) seen below and linked should take you directly to the lot.

Entry through the front door (starred) is easiest.



Dining

Restaurant Names Linked to Google Maps

Breakfast

Tandem Creperie

Cost: \$

Time to Furman: 8 Minutes

[MENU](#)

Upcountry Provisions

Cost: \$\$

Time to Furman: 8 Minutes

[MENU](#)

Biscuit Head

Cost: \$\$

Time to Furman: 20 Minutes

[MENU](#)

Starbucks

Cost: \$

Time to Furman: 6 Minutes

[MENU](#)

Lunch

TRee House Café

Cost: \$\$

Time to Furman: 7 Minutes

[MENU](#)

Farmhouse Tacos

Cost: \$

Time to Furman: 6 Minutes

[MENU](#)

Whistle Stop

Cost: \$

Time to Furman: 7 Minutes

[MENU](#)

Chipotle

Cost: \$

Time to Furman: 8 Minutes

[MENU](#)

Dinner

Sassafras Southern Bistro

Cost: \$\$

Time to Furman: 18 Minutes

[MENU](#)

Nic & Norman's

Cost: \$\$

Time to Furman: 20 Minutes

[MENU](#)

SBH BBQ

Cost: \$\$\$

Time to Furman: 8 Minutes

[MENU](#)

Coral

Cost: \$\$\$

Time to Furman: 20 Minutes

[MENU](#)

Local Attractions



Falls Park on the Reedy River

Time to Furman: 20 Minutes



Swamp Rabbit Trail

28 Miles of Paved Trails



Sigal Music Museum

Time to Furman: 16 Minutes



Swamp Rabbit Café and Grocery

Time to Furman: 14 Minutes



Peace Center

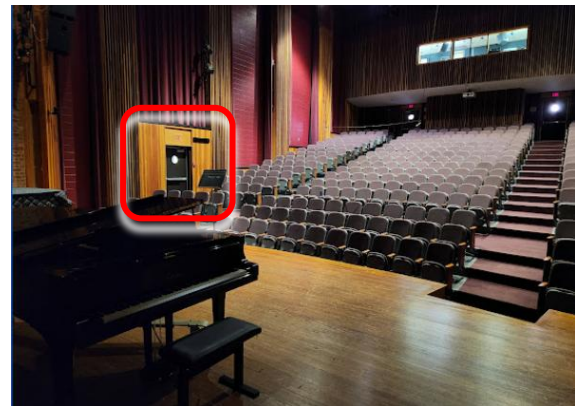
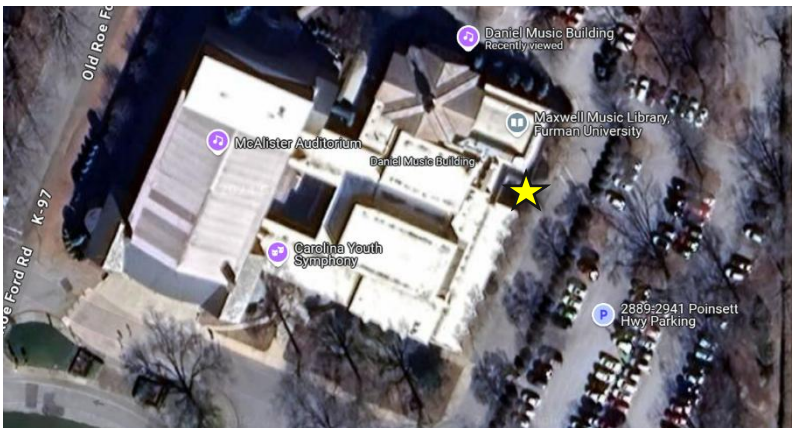
Time to Furman: 18 Minutes

Accessibility

As the Daniel Music Building is a bit older and has not been renovated yet, the Recital Hall (where the main sessions will take place) is not easily navigated without the use of stairs.

Should you need to avoid using stairs, there is an elevator near the service entrance (starred below). It will take you towards the lower level of seating in the recital hall (boxed in red). The Graduate Student Workshop will take place on the main street level of the building (Room 104) and does not have stairs.

[A virtual tour of the entire building](#) is available for your convenience. Should you have any questions or concerns, please contact the local arrangements chair at any time.



Local Arrangements:
Megan Lyons
Megan.lyons2@furman.edu
(631) 880-1033 (text or call)

